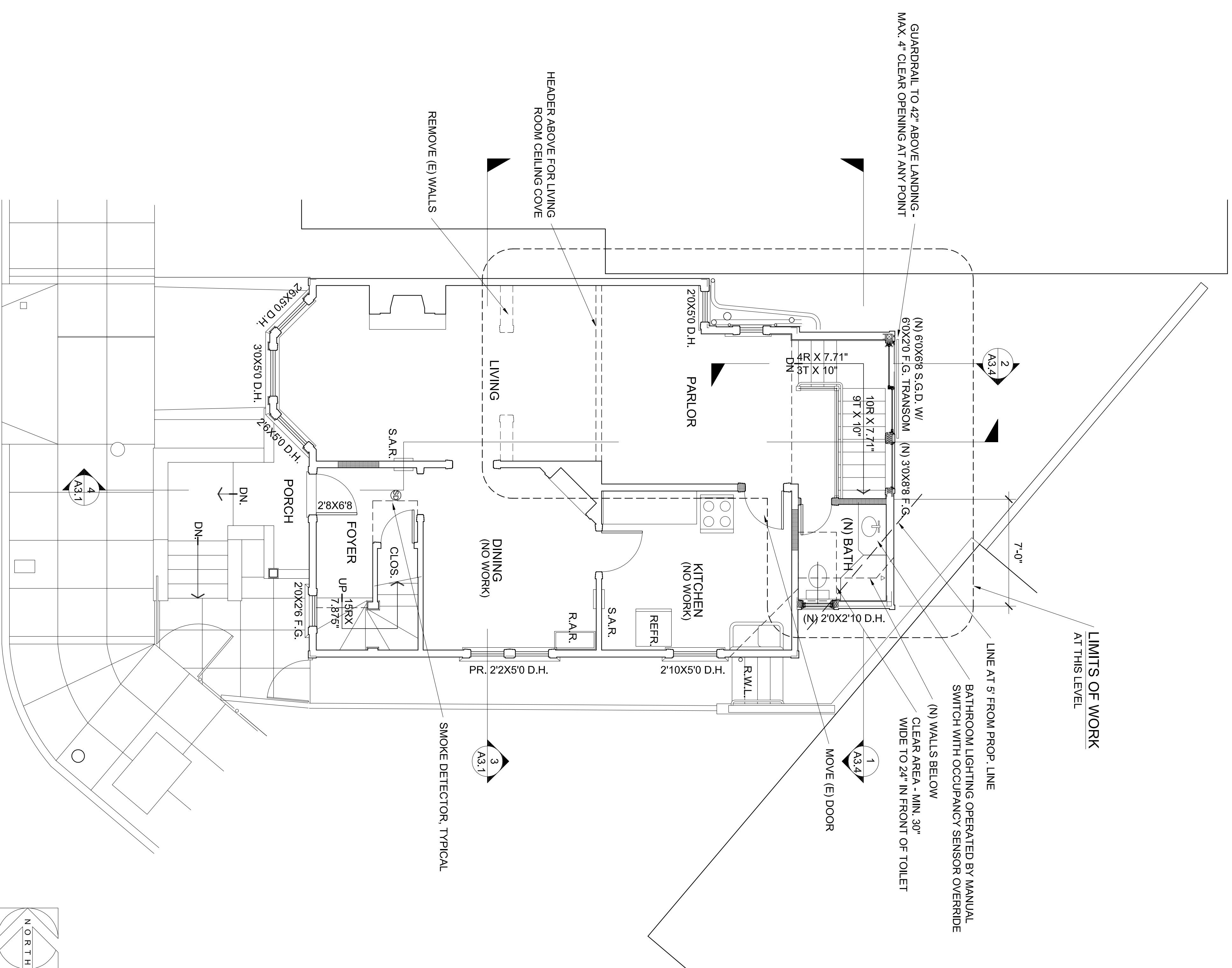
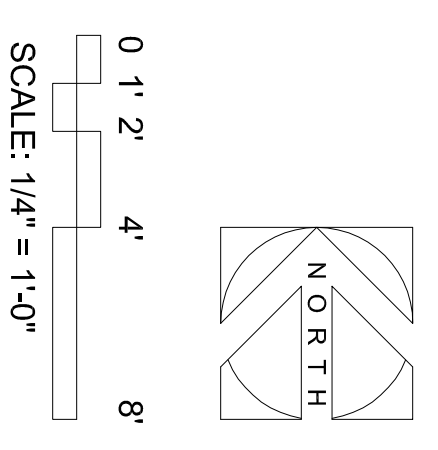


**1** SECOND FLOOR PLAN - EXISTING  
ELEVATION = 100'-0" (REFERENCE DATUM)



**1** SECOND FLOOR PLAN - PROPOSED



SHEET NO. **A2.2**

INTERIOR REMODEL  
**NOE VALLEY**  
SAN FRANCISCO CALIFORNIA

**SECOND FLOOR PLANS - EXISTING & PROPOSED**

DATE: 18 SEP. 2009  
REVISIONS:

**EDW. LEE HAMMACK ARCHITECT**  
Ca. Reg. no. C-13890

3687 Folsom Street San Francisco CA 94110 415.282.4428